

Panda GateDefender Integra

Unified Business Protection



The growing variety and complexity of threats, coming from the Internet, should be blocked before they arrive in your network, avoiding damages to your organization.

Some 99 percent of threats affecting corporate networks come from the Internet. This makes the gateway connection a critical point for network security. A protection at this point will greatly reduce potential problems before they reach the internal network.

Internet-borne threats can be divided into two groups:

- Network-level threats (unauthorized connections, intrusions, data theft...).
- Content-based threats (viruses, worms, spyware, spam...).

Andrew Jaquith, analyst of Yankee group: "It's a matter of survival for AV vendors, which increasingly are looking for ways to reinvent themselves as their products struggle to thwart new types of infections. Cloud-bases, collective intelligence services are the next big thing for anti-malware. I expect that every AV vendor will need to embrace an approach like this if they expect to survive."



The solution: Panda GateDefender Integra

Panda GateDefender Integra is an easy-to-install, unified perimeter security device providing protection in the corporate network perimeter against all types of threats, both network-level and content based, through a simple, single interface for all the protection. The different types of protection included are:

- **Firewall:** Makes internal and external communications comply the security policy.
- **Intrusion Prevention System (IPS):** Prevents network from Intrusion attacks.
- **VPN:** Protects sensitive data transmitted through the Internet.
- **Anti-malware:** Protects against all malicious software types.
- **Content Filter:** Allows Company criteria based Security Policies definition.
- **Web Filter:** Restricts the access to non job related web contents.



Two different hardware models will cover the security needs of small business

| Hardware Model | Recommended Number of users | Firewall Throughput | Concurrent Sessions | 10/100/1000 Eth ports |
|---|-----------------------------|---------------------|---------------------|-----------------------|
|  SB | Up to 50 | 400 Mbps | 180.000 | 4 |
|  300 | Up to 250 | 850 Mbps | 550.000 | 8 |

Main benefits

- **Plug and Protect.** You don't need to configure it to be protected right from the start.
- **Reduces Complexity.** It includes all necessary functions in a single, user friendly interface.
- **Minimizes Operating Costs** providing practically Unattended Protection, through automatic updates and real time graphic activity reports.
- **Contributes to the Regulatory Compliance** avoiding the critical data leakage based on the content itself or customized by user profile.
- **Increases users' productivity** thanks to the liberation of spam and the restricted access to non productive web contents.
- **Prevents Sensitive Data Loss** through the control of incoming and outgoing data content and even encrypting information that travels through the internet.

Key features

- **The only 'Plug and Protect' UTM.** It enables the anti-malware, anti-spam and Web filtering modules by default, protecting you right from the start without you needing to configure it.
- **Complete protection** against all types of threats. It includes best-of-breed protection against malware and potentially dangerous contents (Panda), spam (Cloudmark), undesired Web content (Cobion), deep packet inspection firewall, a feature-rich IPS and a VPN for centrally managing the network security from a single point.
- **Non-stop automatic updates:** Rules and fingerprints are updated every 90 minutes for malware, IPS or Web Filter and every minute for spam, closing the risk window.
- **Network load Optimization:** Restricted access to non productive web pages will optimize the broadband use and the 98 % of detection ratio in spam will liberate the mail servers and internal network from junk traffic.
- **Proactive Content Protection:** IScans incoming and outgoing traffic looking for risky contents according to the defined Security policy. All communications can be encrypted through VPN.

Gateway level protection

Panda GateDefender Integra's hardware and software have been designed to provide maximum protection and performance at gateway level. It scans the most widely used protocols in real time:

- HTTP, FTP, SMTP, IMAP4, POP3 and NNTP for contents
- IP, TCP, UDP and ICMP for network intrusions
- IPSec, SSL, L2TP and PPTP for VPN.

Maximized Control



The Firewall controls the communication between network and Internet or between all network areas, users, groups, etc.

There are two types of filtering:

1. **Static at the network level**, based on rules defined by the administrator for inbound and outbound traffic.
2. **Dynamic at application level** with
 - a. **'Stateful Inspection'** monitors the status and content of basic communications in all protocols and status, timeouts, connections established, etc. of advanced communications in FTP, PPTP, L2TP, IPSEC.
 - b. **'Deep Packet Inspection'**, scanning the content of packets to inspect messages in HTTP, FTP, SMTP, IMAP, POP3, etc., when other modules are enabled.

Secure transmissions



The VPN provides secure communication tunnels with remote users or offices across the Internet, with the transferred data encrypted at source and decrypted at destination.

It operates under host to host, host to net and net to net configurations and supports IPSec, SSL, L2TP and PPTP protocols, in server and client mode.

Reinforced Security

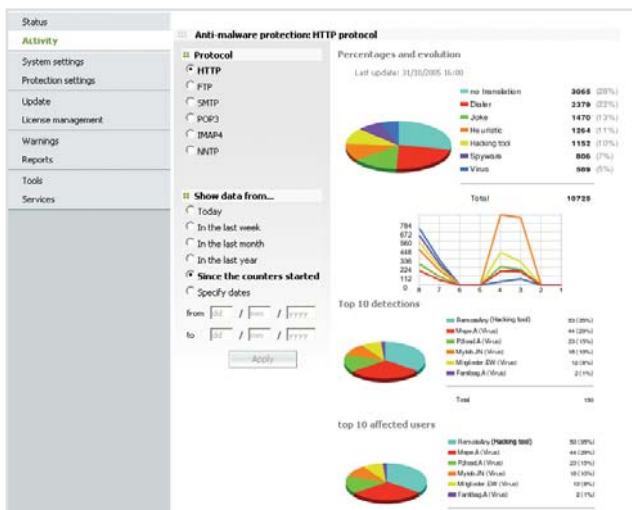


The IPS prevents rapidly spreading external attacks scanning IP, ICMP, TCP and UDP protocols through Rules-based file.

Administrators can specify the threshold for each rule, thereby reducing false positives and configure it to automatically block the intrusions detected.

Optimized web surfing

Thanks to Web filtering, the appliance increases user productivity preventing access to inappropriate or not job related web pages.



Real-time monitoring system

The console offers real-time graphic reports of each protection's activity. Periodic summary reports can also be configured. It also generates detailed reports for each protection.

Complete preventive protection



Panda GateDefender Integra detects and blocks all types of Internet-borne threats they enter the network. It protects against:

- | | | |
|----------|---------|----------------|
| Viruses | Worms | Spyware |
| Phishing | Dialers | Hacking tools |
| Trojans | Jokes | Security risks |

It can also detect unknown malware thanks to its Genetic heuristic scanning capacity joined to Panda's Collective Intelligence.

Security Compliance



The Content Filter protection lets Administrators define their company's security policies. They can define what files and/or emails can be received or sent from the network. This prevents sensitive information leakage and other potential risks.

Junk mail blocking



Panda GateDefender Integra's anti-spam protection prevents network saturation, stopping spam at the network entry point. It also classifies messages as spam and probably spam and takes different actions accordingly.

Optimized web surfing



Thanks to Web Filter, Panda GateDefender Integra increases user productivity preventing access to inappropriate or not job related web pages.

Administrator can choose between 60 categories which ones can be browsed from the internal network and which ones are restricted or allowed uniquely to VIP users.

Centralized monitoring

The system sends customized events warnings through SMTP, SNMP and/or Syslog. Administrator can choose what events should be sent through each method.

Automatic updates

Signatures file for Anti-malware and Content Filter, the Database for web Filter, the Rules file for IPS are automatically updated every 90 minutes.

The spam fingerprints are microudated every minute in order to guarantee the biggest detection ratio.



Revision 1.06 2009

Check it now at www.pandasecurity.com
Get your evaluation version of GateDefender Integra.

PANDA SECURITY | **20th Anniversary** 1990-2010